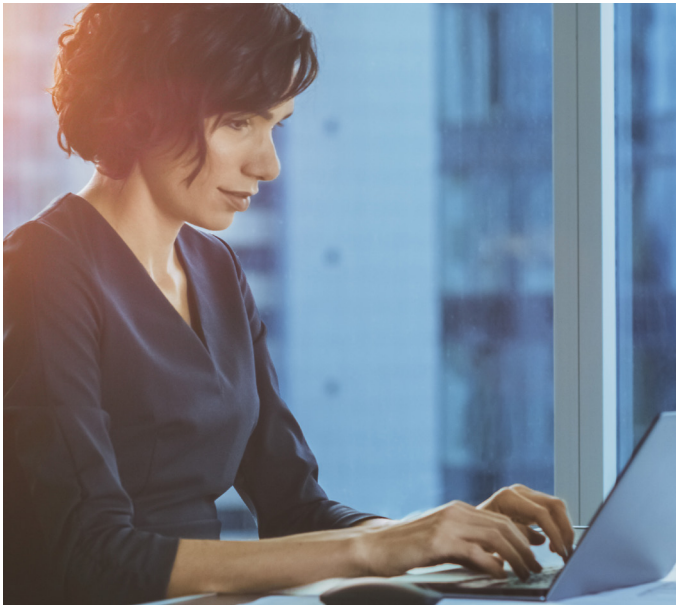


# New ways of working, new ways of connecting, new ways of protecting



## Potential benefits

- Empower highly secure remote connection and collaboration — any user, any device, from any location
- Converge connectivity and security to enable new kinds of workplaces
- Drive end-to-end visibility across users, applications, and devices
- Reduce time and cost required to build, manage, and scale new connections
- Superior modern digital experiences for all kinds of end-users

## The decentralized workplace has been growing for a while, even if recent events accelerated its adoption

We've been moving away from an office-centric view of the workplace where all applications and security are hosted in the data center. Now there's a more fluid model that revolves around the user, allowing them to work from anywhere on any device. But for this to work, businesses must focus on building a remote "branch of one" that can be centrally managed along with premises-based and cloud-hosted resources.

Users aren't the only asset becoming distributed. From branch and satellite offices to labs and manufacturing facilities, businesses are working to build smaller, **more efficient and secure software defined wide-area networks (SD-WAN) that enable converged performance and security management at the edge of the network.**

### What's next?

The future is still being written. No matter what the next normal looks like, we know tomorrow will be more distributed than today:

- Networks need to keep up with increasing demands that are driven by new applications and initiatives to enhance the digital experience of users
- Users require the ability to connect and collaborate at any time, from any place
- Businesses must maintain visibility throughout the network to track performance, protect sensitive data, and maintain an exceptional user experience
- Consistent security must be applied across all users, regardless of how or where they connect

## A better way to build and manage connectivity

AT&T SASE with Cisco enables converged networking and security services to be consumed as a service model and delivered from the cloud to users located at the headquarters, branch locations, or just about anywhere else. This solution unifies networking and security tools, offering a single platform for building and managing the new kinds of connections the business demands.

- Highly secure access to applications and data for users working from fixed locations or remotely
- Complete, end-to-end visibility and integrated management from user to application to cloud
- Performance optimization to identify the fastest, most reliable path to the cloud to deliver superior user experiences
- A zero trust network access (ZTNA) platform with integrated user, device health, behavior checks, and monitoring



### The Solution

#### AT&T SD-WAN with Cisco

AT&T SD-WAN with Cisco is a cloud-delivered overlay wide-area network (WAN) architecture. This solution connects branches to headquarters, data centers, and multi-cloud environments, while providing visibility into the performance of each circuit, delivering a predictable user application experience.

- Better experiences for users across multiple connection types
- Simpler to build, scale, and extend security and access policies across the SD-WAN fabric

#### AT&T Secure Remote Access with Cisco

AT&T Secure Remote Access with Cisco is a comprehensive ZTNA solution that offers highly secure access to applications, wherever they are hosted, from users at any location.

- Provide access to the specific applications users need to complete job duties
- Verify user identity and device health before allowing connection to company resources

#### AT&T Secure Web Gateway with Cisco

AT&T Secure Web Gateway with Cisco offers integrated, cloud-native security that unifies protection against web-based threats with firewall, domain name server (DNS) security, cloud access security broker (CASB), and threat intelligence solution into a single cloud platform.

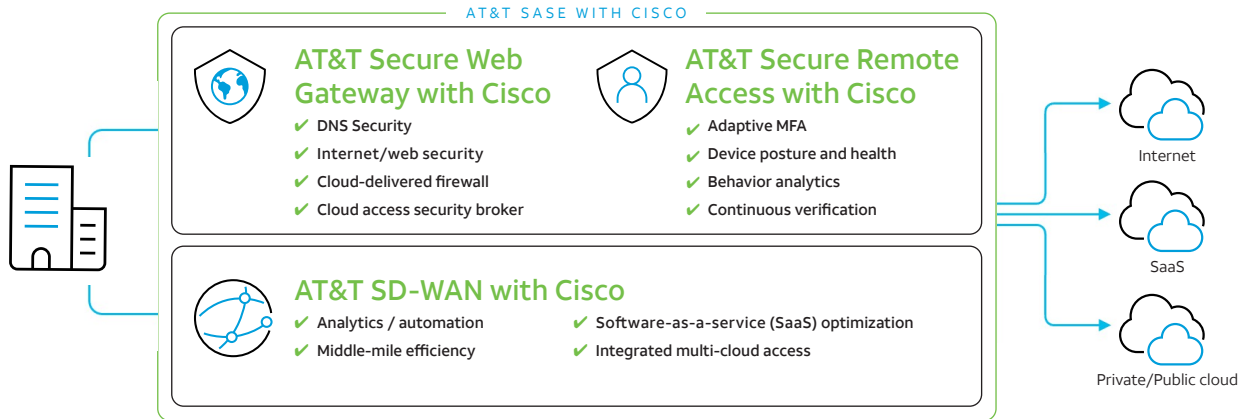
- Protect users, data, and applications from today's complex, multi-stage threats
- Accelerate detection and response with actionable threat intelligence

#### AT&T SASE with Cisco is offered as a managed service

Expert solution planning and deployment  
 SD-WAN and security policy design  
 24/7 network monitoring and help desk support  
 Automated approved security patches and upgrades  
 Complete, unified visibility across locations and users  
 Flexible solution design including fully-managed and co-managed options

## AT&T SASE with Cisco Use Cases

### Use case: Secure edge



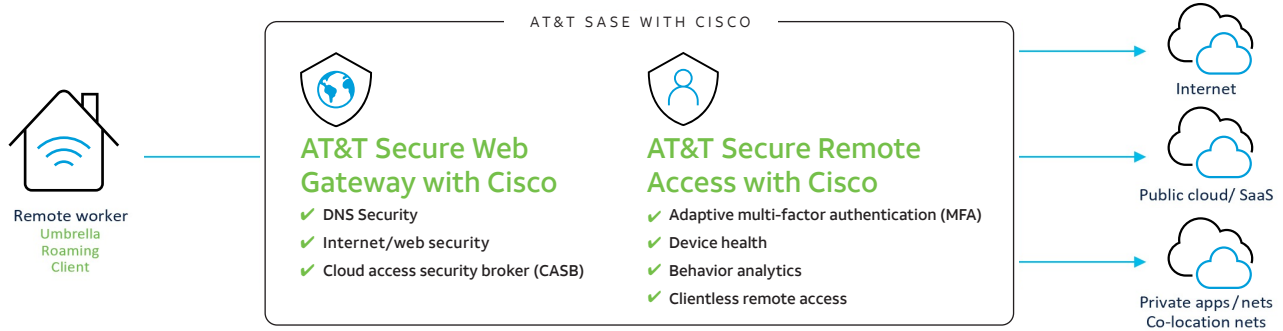
#### Challenges

- Inconsistent user experience based on where they connect, particularly when accessing cloud applications
- Difficult to identify and remediate performance issues
- Security policies may differ across users when accessing applications, data, and the internet

#### Benefits

- Optimized WAN architecture that connects users to the internet and cloud across the highest performing links
- Centralized view of the health of all network circuits
- Cloud-delivered security that follows users wherever they connect

### Use case: Secure remote worker



#### Challenges

- Users connecting from more places and devices
- Virtual private networks (VPNs) are overloaded with connections
- Troubleshooting performance issues is complex

#### Benefits

- Consistent, high performance access to applications and the internet
- Identity and device health are verified before application access is granted
- Unified security policies across users

## Why AT&T SASE with Cisco?

AT&T Business is one of the largest managed services providers (MSPs) in the world and has been protecting a global network for over 140 years. We have been recognized as the top SD-WAN managed service provider as well as a leading managed security services provider.

Our highly-skilled network and security professionals can help augment your in house technology team to design, deploy, and scale highly secure and future ready connections to meet your business's unique requirements.



Combined network and security expertise



Industry leading technology



Global telecom provider for all of your connectivity needs

### Simplified procurement and deployment

AT&T SASE with Cisco provides a networking and security stack that is both modular and scalable. Start with highly secure SD-WAN to connect branches to the internet for improved network performance and resiliency. Layer ZTNA for identity-based access to applications and secure web gateway for cloud-delivered protection against web-based threats as a total integrated solution. Combine with AT&T Business network transports to reduce suppliers for simplification of procurement and technical support.

### Meaningful zero trust innovation

Take the first step to zero trust with two proven market leaders. Our network and security experts can help

you find the best place to start building and help you develop a long-term roadmap for scaling zero trust. AT&T Business conducts comprehensive interoperability testing, technical validation, and solution certification to deliver industry leading technology elements that seamlessly work together.

### Unmatched manageability

Whether you're enabling remote workers or connecting branch locations, the ability to converge network connectivity and security is game changing. This, when added to the superior network manageability and efficiency you already get from AT&T Business allows your business to keep its focus on delivering innovation and superior customer experiences.

## More information

To learn more about AT&T SASE with Cisco: <https://cybersecurity.att.com/products/sase-with-cisco>

### About AT&T Cybersecurity

AT&T Cybersecurity helps to reduce the complexity and cost of fighting cybercrime. Together, the power of the AT&T network, our SaaS-based solutions with advanced technologies including virtualization and actionable threat intelligence from AT&T Alien Labs and the Open Threat Exchange™, and our relationship with more than 40 best-of-breed vendors, accelerate your response to cybersecurity threats. Our experienced consultants and SOC analysts help manage your network transformation to reduce cybersecurity risk and overcome the skills gap. With experience across all industries, we understand your business demands, and deliver the right insights, guidance, and solutions for you.