

AT&T Cybersecurity
2023 The Edge Ecosystem

Focus on US SLED

The edge ecosystem is rapidly developing in state and local government, and higher education. Our research uncovers the trends to help you start strategically planning and investing for securing this dynamic shift in computing.

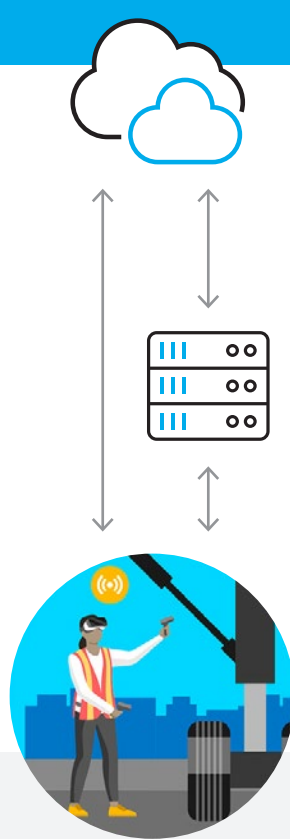
Based on survey results from the 2023 AT&T Cybersecurity Insights Report: Edge Ecosystem.

What are the common characteristics of edge computing?

Software defined
Cloud - private or public or on-premise

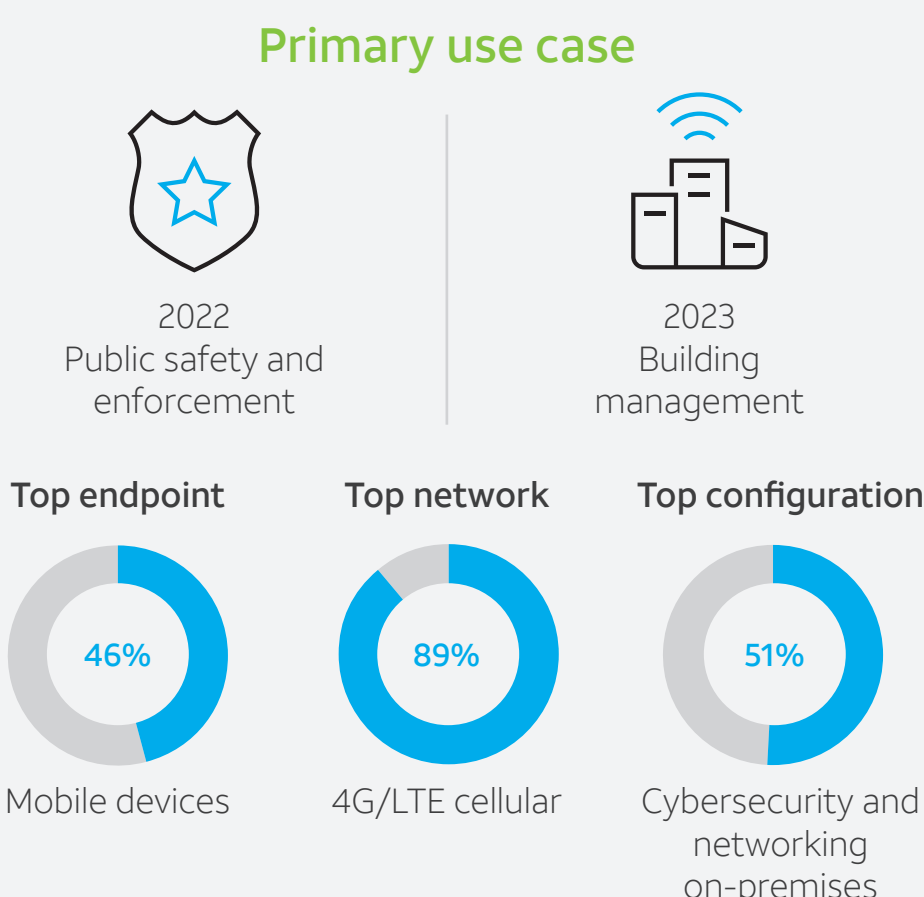
Data driven
Closer to user creation and consumption

Distributed configuration
Intelligence, networks, and management



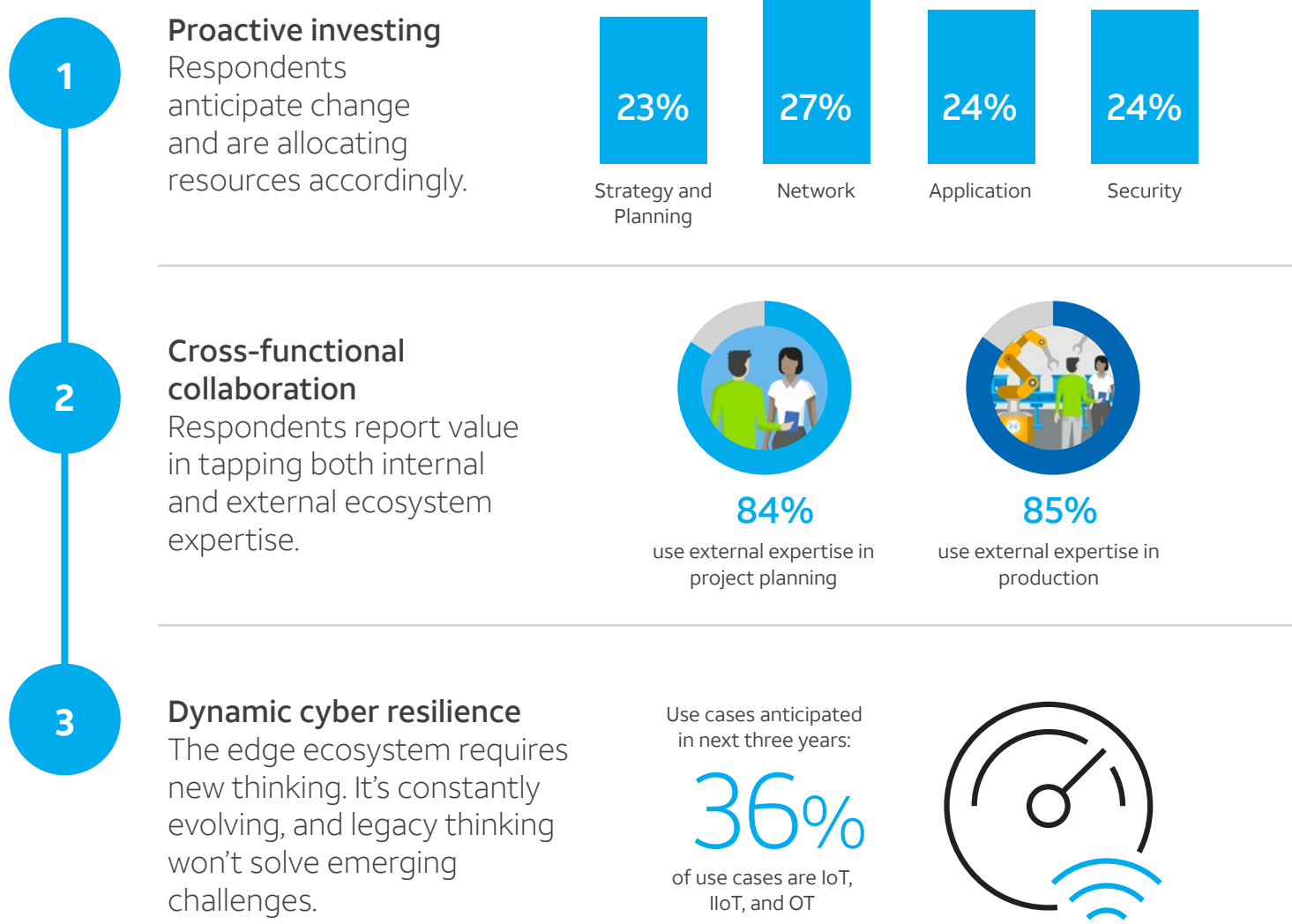
Think of the edge ecosystem as a new opportunity for competitive differentiation and business outcomes.

SLED edge computing benchmarks



The Opportunity: creating a secure edge computing ecosystem in state and local government, and higher education

Three key initiatives emerged as respondents reported the changes they are making.

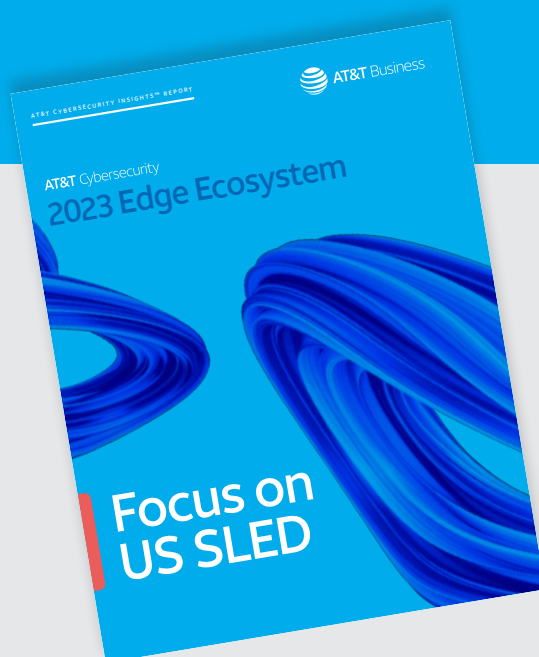


Prepare to secure your edge ecosystem

<p>Define your edge computing profile Work with lines-of-business on use cases. Include business partners and vendors to identify which initiatives impact security.</p>	<p>Develop an investment strategy Bundle security investments with use case development. Evaluate investment allocation and include a security budget.</p>
<p>Increase your compliance capabilities Regulations can vary significantly. Keep up with tech mandates and compliance by tapping advisors with expertise.</p>	<p>Build-in resilience from the start Evaluate investment allocation as use cases multiply. Consider bundling security expense with use case development.</p>
<p>Align resources with security priorities Collaboration expands expertise and lowers resource costs. Edge use case development can help streamline use case development.</p>	<p>Prepare for ongoing, dynamic response Use cases require high-speed, low-latency networks; at the same time, network security and cybersecurity controls will converge.</p>

Get the 2023 AT&T Cybersecurity Insights Report: Focus on US SLED

Download



About the research
Research conducted during July and August 2022. We surveyed 1,418 security practitioners from the United States, Canada, the United Kingdom, France, Germany, Ireland, Mexico, Brazil, Argentina, Australia, India, Singapore, and South Korea. Respondents come from organizations with 1,000+ employees, except for US SLED and energy and utilities verticals. Respondents were limited to those whose organizations have implemented edge use cases that use newer technologies such as 5G, robotics, virtual reality, and/or IoT devices. Respondents are involved in decision-making for edge use cases, including cybersecurity, that involves new technologies such as 5G and IoT devices. For certain questions, participants could choose more than one response. In these cases, the responses do not round to exactly 100%. More information is available in the full report. <https://cybersecurity.att.com/insights-report>